

Connecting to Parker's VPN:

From an **external** network – In a web browser, navigate to <https://inside.parker.edu>
(Please note that this URL will not work from on campus)

Log in with your Parker user name and password

Select the appropriate client for your computer's operating system:

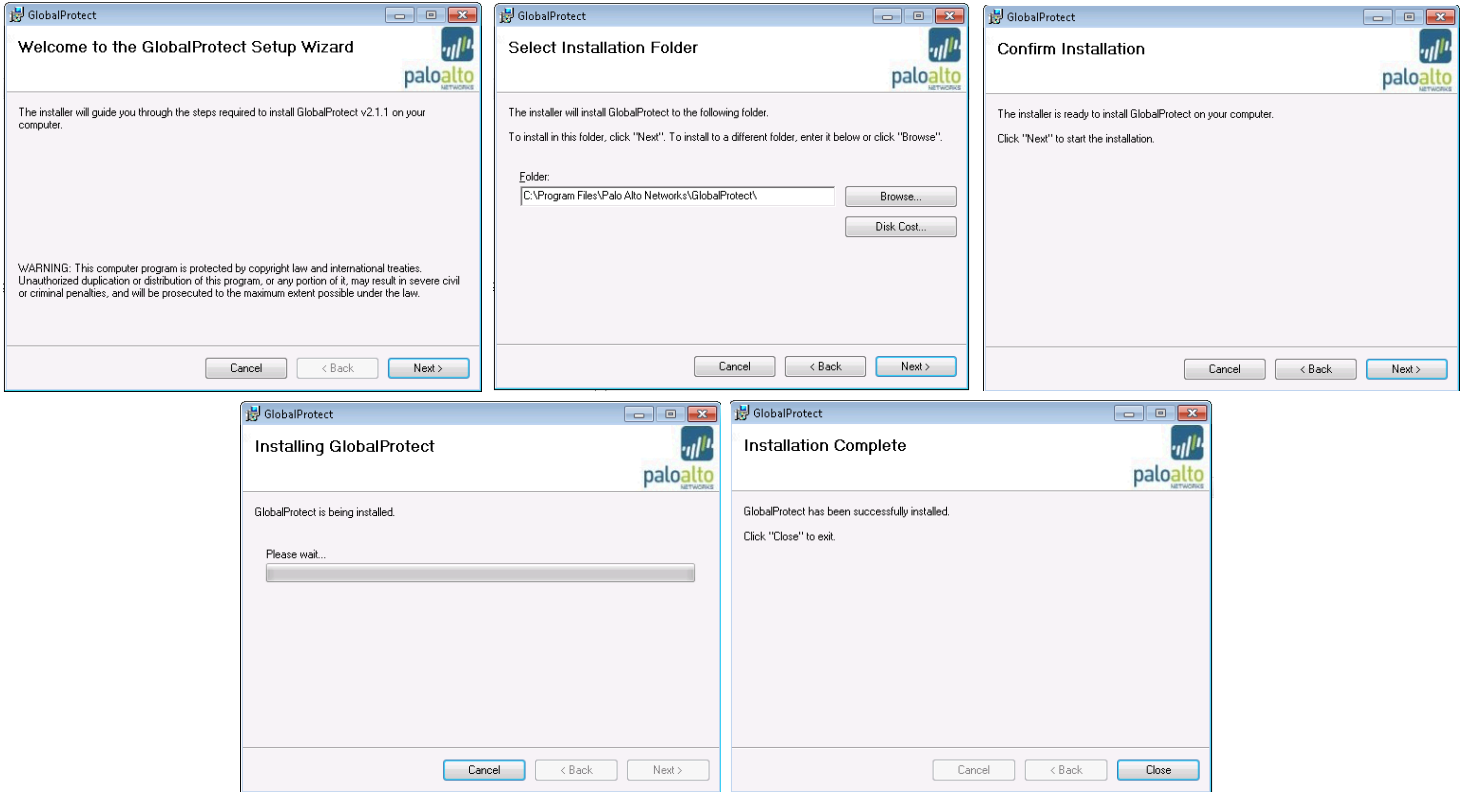


The screenshot shows the Palo Alto Networks GlobalProtect Portal. At the top left is the Palo Alto Networks logo. Below it, the text "GlobalProtect Portal" is centered. There are three blue underlined links: "Download Windows 32 bit GlobalProtect agent", "Download Windows 64 bit GlobalProtect agent", and "Download Mac 32/64 bit GlobalProtect agent". Below these links, there is a block of text providing instructions for each operating system: "Windows 32 bit OS needs to download and install Windows 32 bit GlobalProtect agent.", "Windows 64 bit OS needs to download and install Windows 64 bit GlobalProtect agent.", and "Mac OS needs to download and install Mac 32/64 bit GlobalProtect agent."

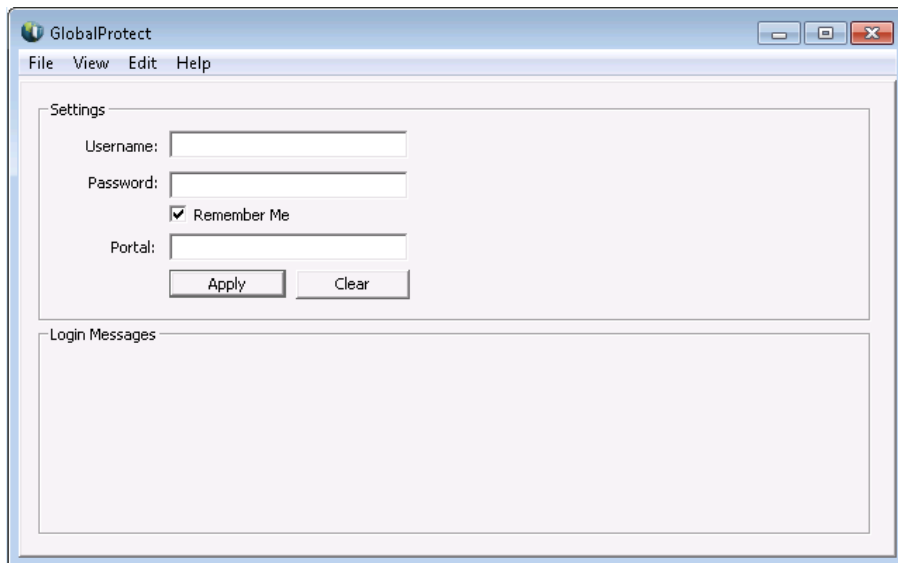
Once the Global Protect download is complete, open the file.

The global protect installation will begin:

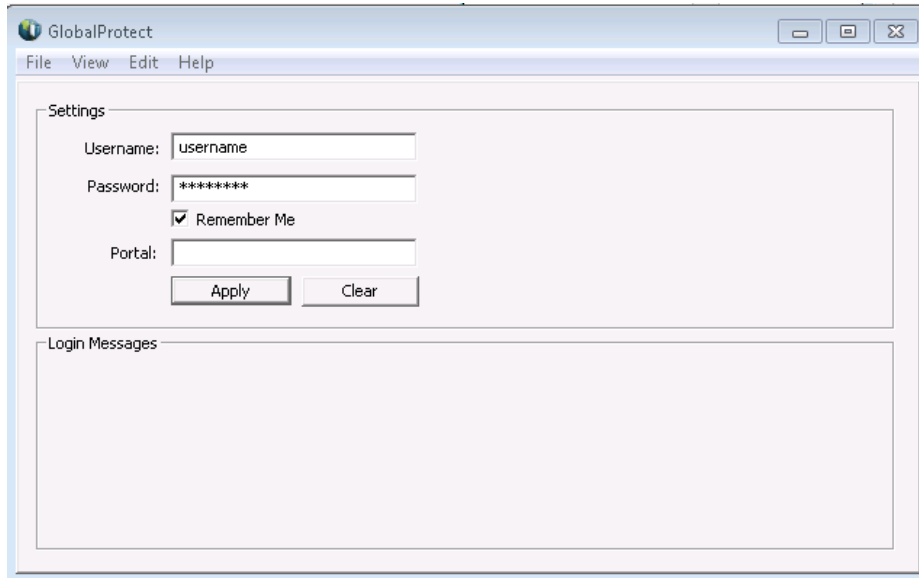
Click Next through all of the following prompts



Once the installation is complete, the Global Protect client will open.



Enter your Parker user name and password:



GlobalProtect

File View Edit Help

Settings

Username:

Password:

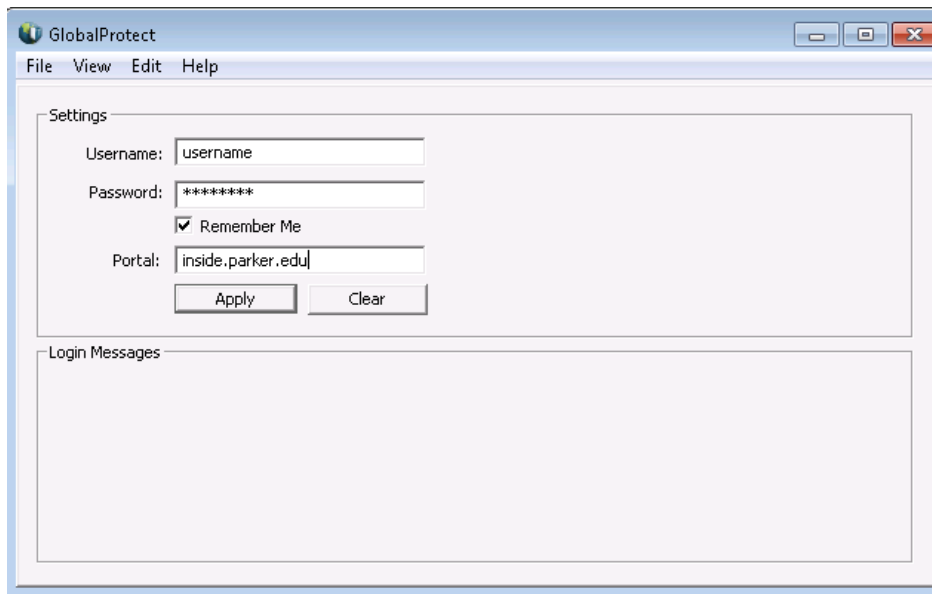
Remember Me

Portal:

Apply Clear

Login Messages

In the Portal field, enter "inside.parker.edu" – without the quotes:



GlobalProtect

File View Edit Help

Settings

Username:

Password:

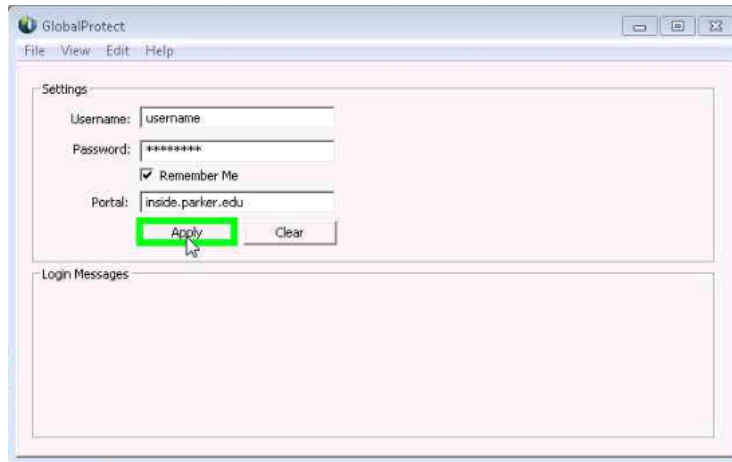
Remember Me

Portal:

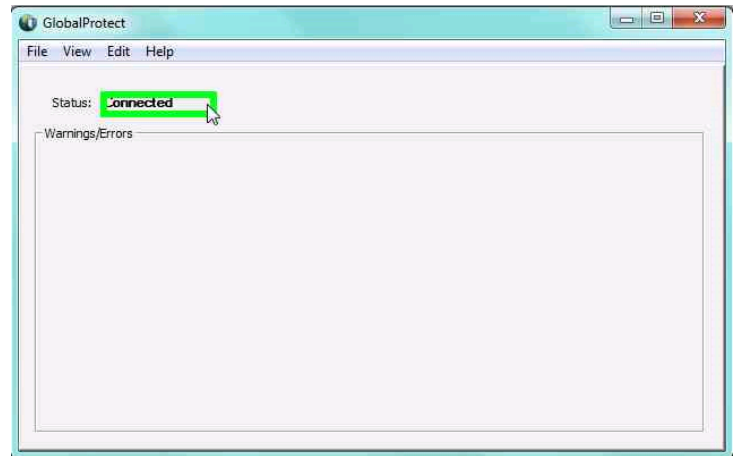
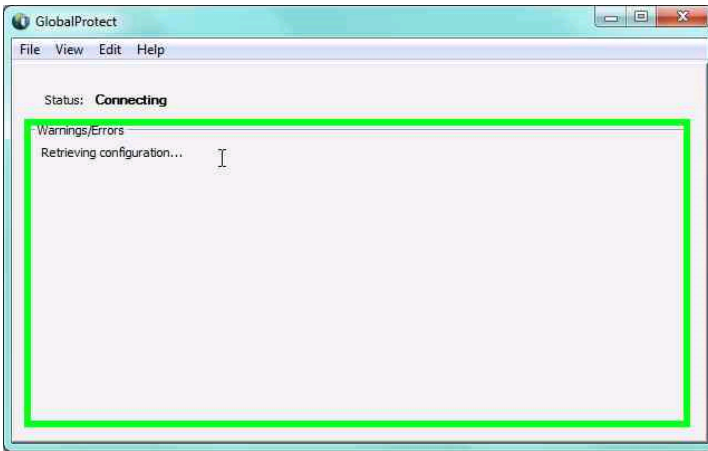
Apply Clear

Login Messages

Click Apply:



After a brief initial configuration, it should say Connected



To disconnect, Click File > Disconnect

